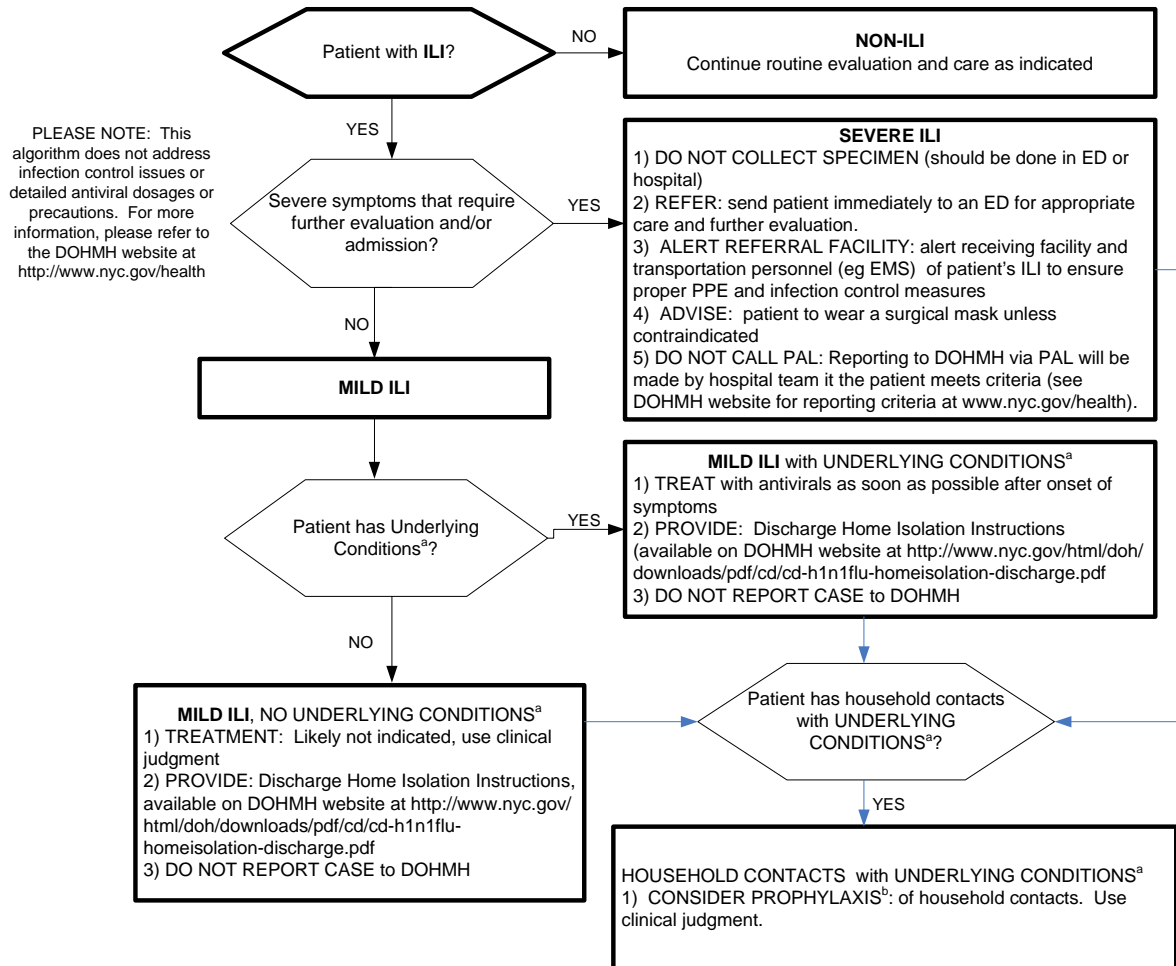


## Outpatient Setting (Non-ED) Testing, Treatment and Prophylaxis Decision Algorithm for Patients Presenting with Influenza-Like Illness 5/22/09

**Influenza-like Illness (ILI) = Fever (> 100.4°F or 38°C) AND cough or sore throat**



**<sup>b</sup>ANTIVIRAL PROPHYLAXIS DECISIONS:**  
Antiviral prophylaxis should be considered for:  
1) CLOSE CONTACTS with underlying conditions OR;  
2) HEALTH CARE WORKERS PROVIDING DIRECT PATIENT CARE WITH BREACH OF PPE OR WITH HOUSEHOLD OR CLOSE CONTACT to a person with ILI during their infectious period (one day before to 7 days after illness onset) should refer to their facility for guidance

**<sup>c</sup> PROVIDER ACCESS LINE (PAL):** 1-866-NYC-DOH1

**<sup>a</sup>UNDERLYING CONDITIONS INCREASING RISK FOR COMPLICATIONS FROM INFLUENZA**  
Age > 65 years  
Age < 2 years  
Chronic pulmonary disease, such as asthma and COPD  
Chronic cardiovascular, renal, and hepatic disease  
Hematologic disease, such as sickle cell anemia  
Metabolic disorders, such as diabetes  
Immunosuppression, including HIV-related or caused by medication  
Compromised respiratory function, and conditions which increase the risk for aspiration  
Persons with neuromuscular disorders, seizure disorders, or cognitive dysfunction that may compromise the handling of respiratory secretions  
Pregnancy  
Persons requiring long-term aspirin therapy for diseases such as rheumatoid arthritis or Kawasaki disease